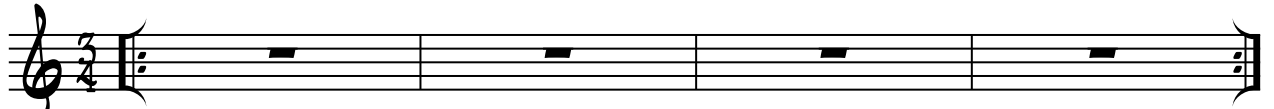


# TURKISH CAFE'

FRANCESCO DOMENICO MARCOCCI

♩=140

## INTRO



**A**

5 C-(MA7) B<sup>b</sup>7<sup>TALT</sup> E7 D<sup>b</sup>7/G

9 C-(MA7) B7 G-7 F#7

13 B-7 B<sup>b</sup>7 E-7 E<sup>b</sup>7

17 C-7 C-(MA7) A<sup>b</sup>MA7 A<sup>b</sup>7 F#MA7 F-7 B<sup>b</sup>13

21 A7<sup>#9</sup><sub>#5</sub><sub>#11</sub>

**B**

TUMBAO

25 D<sup>b</sup>MA7 CMA7

27 D<sup>b</sup>MA7/E<sup>b</sup> D-7

29 F#MA7 B7 B<sup>b</sup>13(b5)

A7 A<sup>b</sup>+7 G-7 F#MA7 F7<sup>b</sup>13

STOP TIME

2 SOPRANO IMPROVISE TURKISH CAFE' X4

35

37

41

- INTRO SECTION
- MELODY
- SOLOS #1 ON C- VAMP
- B & C SECTION BETWEEN SOLOS
- SOLOS #2 ON Bb VAMP
- DRUM SOLO ON C SECTION
- INTRO SECTION DRUM SOLO
- MELODY OUT